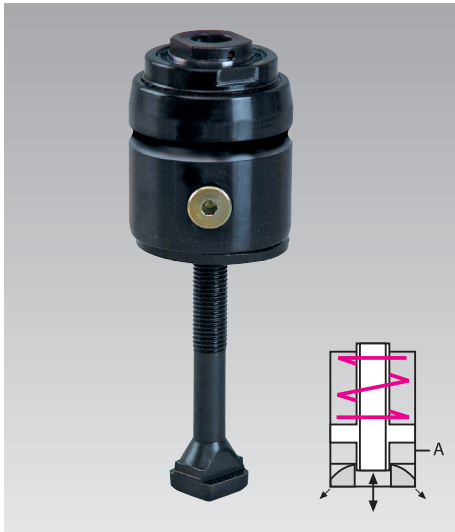




Hollow Piston Cylinders

single acting, hydraulic clamping and spring unclamping

max. operating pressure 400 bar, max. clamping force of 30 kN up to 104 kN



Advantages

- Optimum adaptation to the clamping surface by spherical disk
- T-bolt, secured against loosening
- Ideal force transmission
- Convenient and compact design with gripping surface
- Large clamping stroke
- No interfering edges when inserting the dies
- Easy to retrofit
- Piston hardened and ground
- Easy installation
- Fully resilient stroke limitation

Application

These hollow-piston cylinders are used for clamping and locking on machines and plants, on press bed and ram.

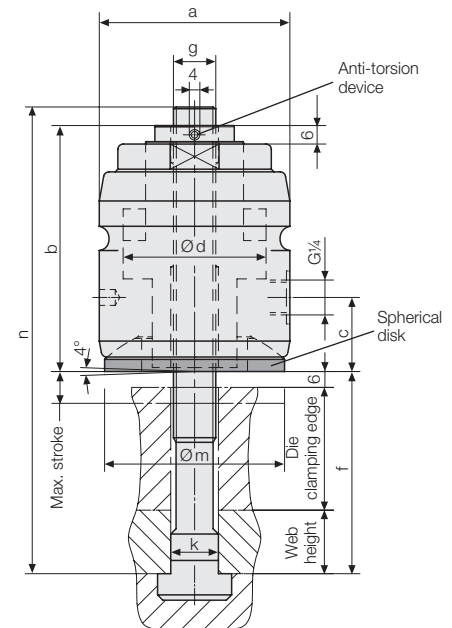
Due to the manageable and compact design, hollow-piston cylinders are especially suitable where space is limited.

The use is possible at ambient temperatures up to a maximum of 120 °C.

Description

The element is manually placed on the clamping edge of the die.

Clamping by the application of hydraulic pressure to the piston and unclamping by spring force. By means of the T-bolt the die is clamped against the clamping surface of the press ram or bed.



**dimension "f" = die clamping edge
+ web height
+ ½ stroke**

Hollow piston cylinder with T-bolt

adjusted and secured (please specify dimension "f" when ordering)

For T-slot	[mm]	18	22	28	36
Clamping force at 400 bar	[kN]	60	60	104*	104*
Dimension „f“ min.	[mm]	30	36	56	60
Dimension „f“ max.	[mm]	66	106	144	144
Spring return force, min.	[N]	320	320	570	570
Piston Ø d	[mm]	54	54	70	70
Stroke	[mm]	12	12	12	12
Total oil volume	[cm³]	18	18	32	32
a	[mm]	72	72	90	90
b	[mm]	93	93	105	105
c	[mm]	30	30	27	27
g	[mm]	M 16	M 20	M 24	M 30
k	[mm]	18	22	28	36
m	[mm]	68	68	78	78
Weight	[kg]	2.39	2.67	4.77	5.29

Part no. 82134 1802 82134 2202 82135 2802 82135 3602

Max. operating pressure 400 bar

Other sizes, dimension "f" settings and special versions on request

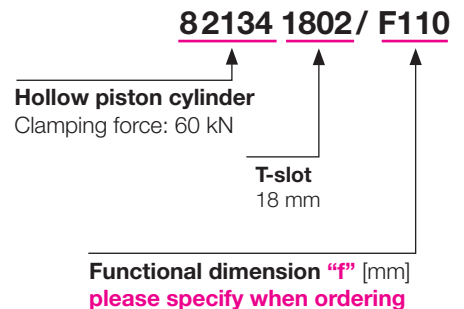
Hollow piston cylinder without T-bolt

Weight	[kg]	2.1	2.09	3.67	3.49
Part no.		82134 0103	82134 1103	82135 0102	82135 1102

T-bolt, separate

For T-slot	[mm]	18	22	28	36
n	[mm]	160	200	250	250
Property class		12.9	12.9	12.9	8.8
Weight	[kg]	0.29	0.58	1.10	1.8
Part no.		5700 022	5700 023	5700 024	5700 048

Example of ordering



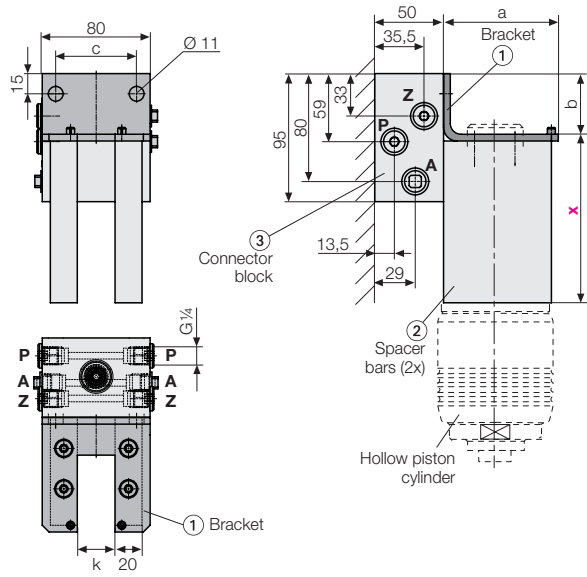
Important note!

If hollow piston cylinder and T-bolt are supplied separately, adjust them to suit dimension "f" and secure them.

Accessories

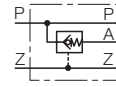
Parking station without position monitoring

accommodates the hollow piston cylinder during die change.

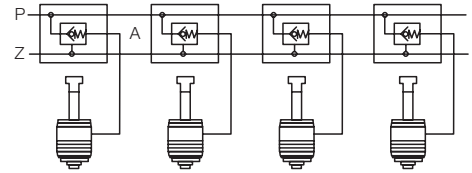


Distance dimension "x"
= Dimension "a" - ½ stroke
please specify when ordering

Hydraulic circuit diagram



Application with integral check valve



Part numbers

for hollow piston cylinder type

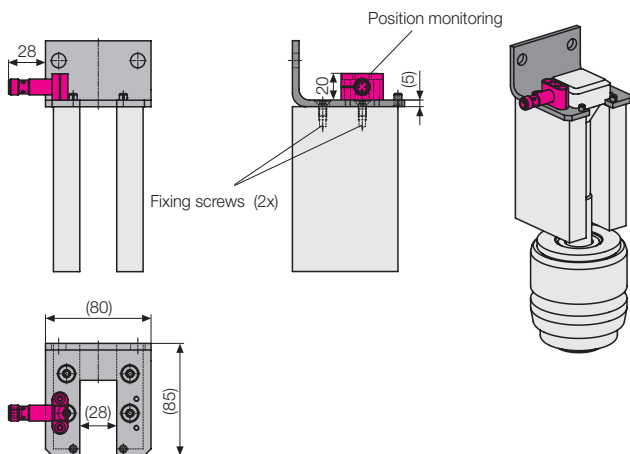
		2132	2133	2134	2134	2135	2135
T-slot width k		14	16	18	22	28	36
a	[mm]	60	60	72	72	85	90
b	[mm]	40	40	45	45	45	45
c	[mm]	36	36	60	60	60	60

Bracket ①	Part no.	2753 140	2753 160	2753 180	2753 220	2753 280	2753 360
Bracket ① with mounted spacer bars ②	Part no.	82753 1430	82753 1630	82753 1830	82753 2230	82753 2830	82753 3630
Bracket ① with spacer bars ② and connector block ③	Part no.	82753 1450	82753 1650	82753 1850	82753 2250	82753 2850	82753 3650
Connector block ③ (separate) with integral check valve	Part no.	82753 4012	82753 4012	82753 4002	82753 4002	82753 4002	82753 4002

Special designs on request

Parking station with position monitoring

An inductive proximity switch indicates when a hollow piston cylinder is mounted to the parking station.



Position monitoring

Control options

- The correct number of clamping cylinders and thus sufficient clamping force is available
- Operator protection: no clamping cylinder will be forgotten
- Control of a selective selection per tool size is possible

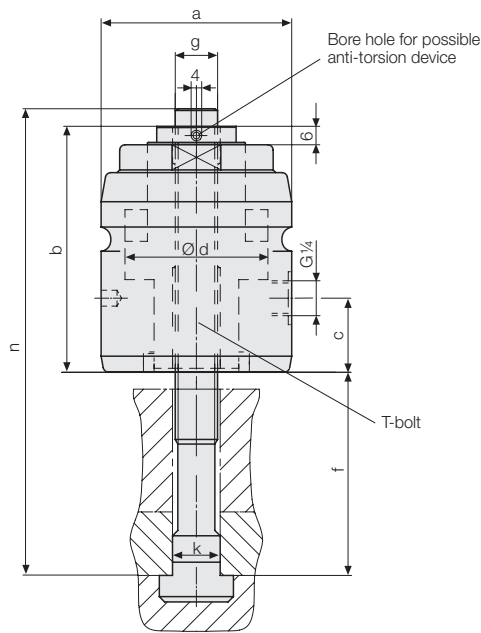
Please contact us!

Other accessories

- **Hydraulic power units**
see product group 7
- **Hydraulic accessories**
see product group 11
- **Angular rotary coupling**
Part no. 9208 176

Hollow piston cylinder “L” design without spherical disk

Hollow piston cylinder “L” design without spherical disk



Hollow piston cylinder “L” design without spherical disk **with T-bolt**

- with adjusted and secured T-bolt (specify dimension “f” when ordering)
- without spherical disk

For T-slot	[mm]	14	16	18	22	22	28	36
Clamping force at 400 bar	[kN]	28	40	60	60	60	104	104
Dimension „f“ min.	[mm]	32	31	30	32	36	56	60
Dimension „f“ max.	[mm]	59	58	66	92	106	145	145
Spring return force, min.	[N]	255	360	320	400	320	570	570
Piston Ø d	[mm]	35	42	54	54	54	70	70
Stroke	[mm]	8	8	12	6	12	12	12
Total oil volume	[cm³]	6	8	18	9	18	32	32
a	[mm]	50	58	72	72	72	90	90
b	[mm]	64.5	66.5	92.5	67	92.5	104	104
c	[mm]	13	14	29	12	29	26	26
g	[mm]	M 12	M 14	M 16	M 20	M 20	M 24	M 30
k	[mm]	14	16	18	22	22	28	36
m		G 1/8	G 1/8	G 1/4	G 1/4	G 1/4	G 1/4	G 1/4
Weight	[kg]	1.0	1.2	2.5	2.0	2.8	4.8	5.4
Part no.		82132 1432	82133 1632	82134 1832	82134 2222	82134 2232	82135 2832	82135 3632

Max. operating pressure 400 bar

Other sizes, dimension “f” settings and special designs on request

Hollow piston cylinde “L” design without spherical disk **without T-bolt**

- without spherical disk

For T-slot	[mm]	14	16	18	22	22	28	36
Weight	[kg]	0.75	1.0	2.2	1.7	2.2	3.8	3.6
Part no.		82132 0132	82133 0132	82134 0132	82134 1122	82134 1132	82135 0132	82135 1132

Important note!

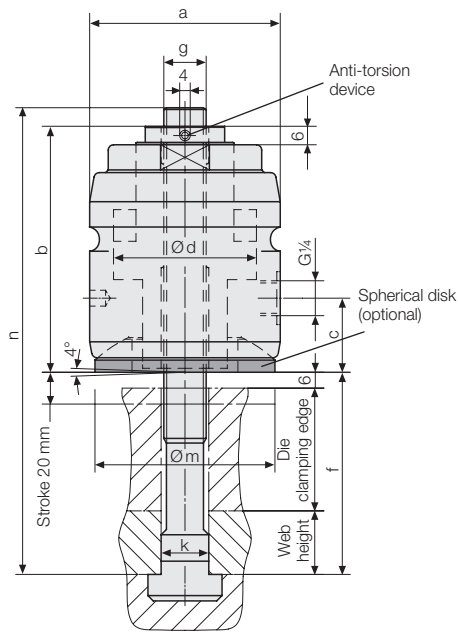
If hollow piston cylinder and T-bolt are supplied separately, adjust them to suit dimension “f” and secure them.

Accessories

T-bolt, separate

For T-slot	[mm]	14	16	18	22	22	28	36
n	[mm]	125	125	160	160	200	250	250
Property class		12.9	8.8	12.9	8.8	12.9	12.9	8.8
Weight	[kg]	0.16	0.19	0.29	0.76	0.58	1.1	1.8
Part no.		5700 143	5700 144	5700 022	10787 0211	5700 023	5700 024	5700 048

Variant with a total stroke of 20 mm



Optimum adaptation to varying heights of the clamping edges of dies by an increased total stroke of 20 mm (higher total stroke on request).

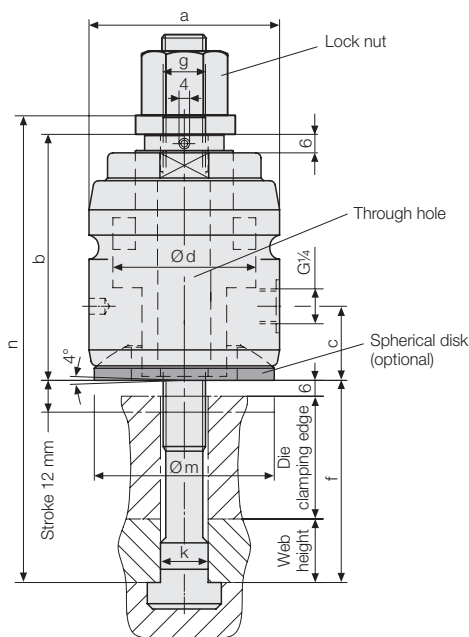
Technical design, clamping forces and dimensions correspond to the standard design. Due to the increased total stroke, dimension "b" is greater than indicated on page 1.

Total stroke 20 mm:

Dimension "b" with a clamping force of 60 kN: 120 mm

Dimension "b" with a clamping force of 104 kN: 132 mm

Variant with variable clamping dimension



Freely adjustable and flexible adaptation to suit varying heights of clamping edges of the dies by quick and easy adjustment of the tie rod by means of a lock nut.

The tie rod is inserted through the hollow piston cylinder and adjusted to the correct dimension by means of the lock nut.

In this design, the cylinder has a through hole instead of a thread.

Technical design, clamping forces and dimensions correspond to the standard design.

Important notes

Increased risk of injury in the case of an incorrect adjustment of the variants with higher total stroke or variable clamping dimension.

The clamping stroke must be less than 6 mm.